



MARRIOTT RESORT  
PRAIA D'EL REY

# FACT SHEET



## PRAIA D'EL REY MARRIOTT GOLF & BEACH RESORT

Av. D.ª Inês de Castro, N.º 1 Vale de Janelas, 2510-451 Óbidos, Portugal

T. +351 262 905 100

[www.praia-del-rey.com](http://www.praia-del-rey.com)

 [facebook.com/MarriottPraiaDelRey](https://facebook.com/MarriottPraiaDelRey)

 [instagram.com/marriottpraiaadelrey/](https://instagram.com/marriottpraiaadelrey/)

### PRAIA D'EL REY MARRIOTT GOLF & BEACH RESORT

The Marriott Resort Praia D'El Rey is the ideal venue to host any type of event. Whether you are organizing business meetings, team-building events, product launches or weddings and social functions, you can enjoy the tranquil surroundings and wonderful views of the Atlantic Ocean from our Resort.



#### ACCOMMODATION

- 177 Rooms
- 5 Rooms for people with disabilities
- Maximum of 3 guests per room
- Golf / Garden views
- Ocean views (side / front / premium)
- 4 Suites
- 4 Junior Suites
- 1 Presidential Suite
- Terrace or balcony
- Check-in from 3:00 pm
- Check-out before 12:00 pm
- Air conditioning
- Free Wi-Fi
- Cordless phone / Baby phone
- Cable television
- Mini-bar
- Safe
- Iron and ironing board
- Hairdryer
- Bathrobes and slippers
- Room Service (24 hours)
- Free parking

#### HOTEL SERVICES

- Direct beach access
- Kids Club
- Business Center
- Free Wi-Fi
- Laundry Service
- Babysitting (48 hours notice required)
- Spa
- Health Club
- Turkish Bath
- Finnish Sauna
- Champagne Pool
- Vitality Pool
- Indoor heated pool
- 2 outdoor swimming pools
  - 1 for adults and 1 for children
- Elevators
- Terrace
- Landscaped gardens
- Access to all areas of the hotel for people with reduced mobility



## PRAIA D'EL REY MARRIOTT GOLF & BEACH RESORT

Av. D.ª Inês de Castro, N.º 1 Vale de Janelas, 2510-451 Óbidos, Portugal

T. +351 262 905 100

[www.praia-del-rey.com](http://www.praia-del-rey.com)

 [facebook.com/MarriottPraiaDelRey](https://facebook.com/MarriottPraiaDelRey)

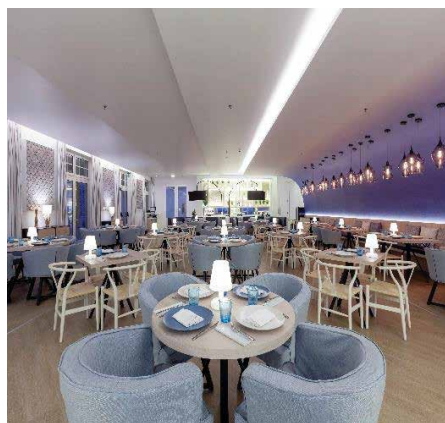
 [instagram.com/marriottpraiaadelrey/](https://instagram.com/marriottpraiaadelrey/)

### RESTAURANTS & BARS

The Marriott Resort Praia D'El Rey offers meticulous attention to detail and is an excellent venue for hosting functions. We have a number of conference rooms, as well as restaurants and bars, which can be configured to suit your meeting or event.

- Emprata - 82 People
- Tempera - 190 People
- Contato Bar - 60 People
- Pool Bar - 200 People

- 1300 m2 of space for events, with four separate meeting rooms or two ballrooms (maximum capacity of 250 people)
- 8 breakout rooms
- Rooms that can be converted into meeting rooms for up to 15 people
- Private entrance to meeting rooms
- Access to terrace with spectacular ocean views
- The perfect setting for weddings
- Wide range of motivational team-building activities in and out of the Resort, including sports, extreme sports, sailing, diving, golf and tours of local vineyards (with wine tasting), among other activities.



### BANQUET SERVICES

#### Banquet Rooms in the Hotel

- Terrace 250 people / dinner
- Ballroom dinner 220 people / dinner

#### Banquet Rooms in the Club House

- Room A 60 people / dinner
- Room B 48 people / dinner
- Room (A+B) 100 people / dinner



## PRAIA D'EL REY MARRIOTT GOLF & BEACH RESORT

Av. D.ª Inês de Castro, N.º 1 Vale de Janelas, 2510-451 Óbidos, Portugal

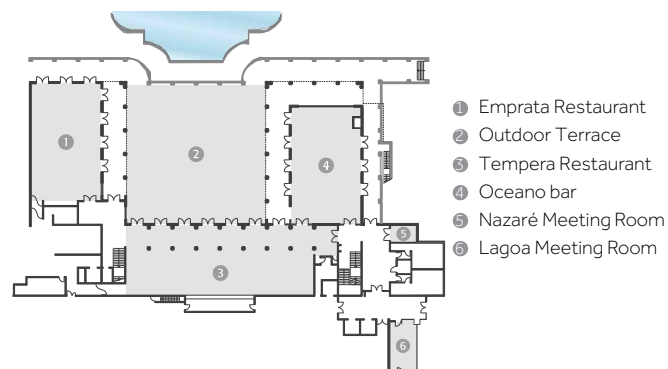
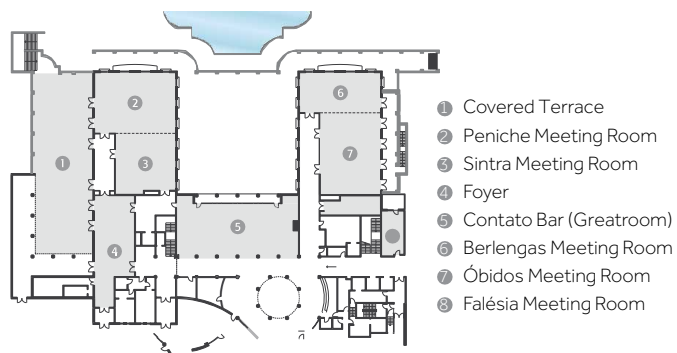
T. +351 262 905 100

[www.praia-del-rey.com](http://www.praia-del-rey.com)

[facebook.com/MarriottPraiaDelRey](https://www.facebook.com/MarriottPraiaDelRey)

[instagram.com/marriottpraiadelrey/](https://www.instagram.com/marriottpraiadelrey/)

### BANQUET ROOMS - HOTEL



Rooms	m²	Height	Buffet Banquet	Set Menu Banquet	Cocktail	Theatre	School	U-Shape
<b>Ballroom 1 (Peniche+Sintra)</b>	289	3.6m	220pax	180pax	250pax	250pax	180pax	70pax
Peniche	167	3.6m	100pax	90pax	140pax	130pax	100pax	50pax
Sintra	122	3.6m	80pax	60pax	110pax	90pax	60pax	30pax
<b>Ballroom 2 (Óbidos+Berlengas)</b>	275	3.6m	200pax	170pax	250pax	230pax	160pax	70pax
Berlengas	111	3.6m	70pax	60pax	100pax	80pax	50pax	30pax
Óbidos	164	3.6m	100pax	90pax	140pax	130pax	100pax	50pax
Nazaré	16	2.5/2.13m	—	—	—	—	—	—
Fálésia	30	2.5/2.13m	—	—	—	20pax	—	15pax
Lagoa	30	3.5m	—	—	—	20pax	—	15pax
Covered Terrace	490	—	250pax	230pax	330pax	—	—	—
Outdoor Terrace	355	—	220pax	220pax	430pax	—	—	—
Hospitality Room	15	2.5m	—	—	—	—	—	—

## PRAIA D'EL REY MARRIOTT GOLF & BEACH RESORT

Av. D.ª Inês de Castro, N.º 1 Vale de Janelas, 2510-451 Óbidos, Portugal

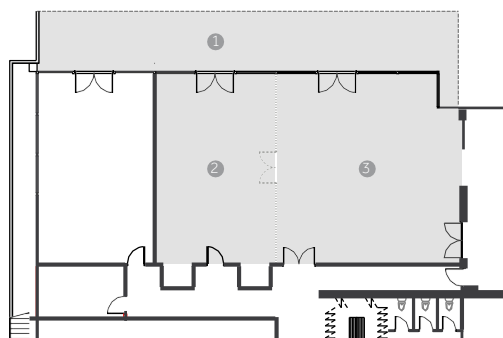
T. +351 262 905 100

[www.praia-del-rey.com](http://www.praia-del-rey.com)

 [facebook.com/MarriottPraiaDelRey](https://facebook.com/MarriottPraiaDelRey)

 [instagram.com/marriottpraiadelrey/](https://instagram.com/marriottpraiadelrey/)

### BANQUET ROOMS - CLUB HOUSE



- ① Outdoor Terrace
- ② Club House B
- ③ Club House A

#### • Rooms / Area

2 / 137m<sup>2</sup>

#### • Maximum Capacity

160 people / teatro

#### • Outdoor terrace

+300 people / cocktail

Magnificent views of the golf course and the ocean.

Rooms	m <sup>2</sup>	Height	Buffet Banquet	Set Menu Banquet	Cocktail	Theatre	School	U-Shape
Club House A	82	3m	48 pax	60 pax	100 pax	102 pax	60 pax	36 pax
Club House B	55	3m	30 pax	48 pax	40 pax	60 pax	40 pax	28 pax
Club House A+B	137	3m	108 pax	120 pax	150 pax	160 pax	112 pax	52 pax
Club House Outdoor Terrace	400	-	250 pax	250 pax	300 pax	-	-	-



## PRAIA D'EL REY MARRIOTT GOLF & BEACH RESORT

Av. D.ª Inês de Castro, N.º 1 Vale de Janelas, 2510-451 Óbidos, Portugal

T. +351 262 905 100

[www.praia-del-rey.com](http://www.praia-del-rey.com)

 [facebook.com/MarriottPraiaDelRey](https://facebook.com/MarriottPraiaDelRey)

 [instagram.com/marriottpraiadelrey/](https://instagram.com/marriottpraiadelrey/)

### ACTIVITIES

Located on the "silver coast", the hotel offers a wide range of activities from treatments at the Kalyan Spa, to tennis games or a visit to the health club. Visit the beaches that make the west region of Portugal a very popular destination. In addition to enjoying all of the hotel amenities, there is also a wide range of services and local leisure activities.



### ACTIVITIES AT THE HOTEL

- Direct beach access
- Kalyan Spa
- Kalyan Fitness
- Outdoor pool
- -1 for adults and 1 for children
- Indoor heated pool
- Turkish Bath
- Finnish Sauna
- Vitality Pool
- Champagne Pool
- Kids Club
- Yoga
- Bike Rental

### OTHER ACTIVITIES

- 18 hole Golf Course
- Golf Academy - Lessons available with a certified golf professional
- Putting Green and Short Game Area
- Driving Range
- Tennis Academy
- Surf, Bodyboard and Stand Up Paddle
- Canoeing
- Kitesurf and Windsurf
- Diving and snorkeling
- Sport Fishing
- Paintball
- Archery
- Karts
- Mountain Biking
- Hiking
- Horse Riding

## PRAIA D'EL REY MARRIOTT GOLF & BEACH RESORT

Av. D.ª Inês de Castro, N.º 1 Vale de Janelas, 2510-451 Óbidos, Portugal

T. +351 262 905 100

[www.praia-del-rey.com](http://www.praia-del-rey.com)

 [facebook.com/MarriottPraiaDelRey](https://facebook.com/MarriottPraiaDelRey)

 [instagram.com/marriottpraiadelrey/](https://instagram.com/marriottpraiadelrey/)

### PLACES TO VISIT

#### Caldas da Rainha

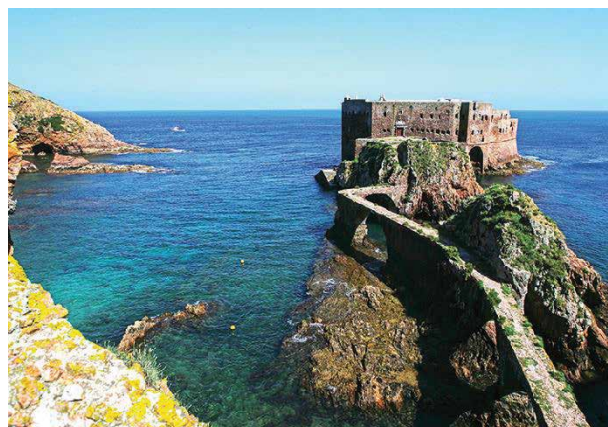
Located just 25 minutes from the Resort, Caldas da Rainha is widely recognized as the home of the oldest thermal hospital in the world. A popular outdoor market, Praça da Fruta, lies at the heart of the city, where you can find a wide variety of fruit, vegetables and local produce from the Western Region of Portugal. A great place for visiting or sightseeing, we recommend a visit to the Bordallo Pinheiro factory to see some of the unique ceramic pottery produced by Portuguese designer Rafael Bordallo Pinheiro.

#### Óbidos

Walking through this historic town is like stepping back in time. Encircled by medieval walls, Óbidos is a beautiful place to visit, with charming cobblestone streets, whitewashed houses, lively shops and cosy bars.

#### Peniche

This fishing village by the sea is located just 20 minutes from the Resort. The region is renowned for its spectacular beaches and coastline and the Peniche peninsula is famous for its perfect surf conditions.



### OTHER LOCATIONS FOR EVENTS

#### Caldas da Rainha

Centro Cultural e Congressos das Caldas da Rainha  
Located 25 minutes from the Resort

Meeting Rooms:	5
Máx. people per room:	660 people
Amphitheatre:	700 people

[www.ccc.eu.com](http://www.ccc.eu.com)

## PRAIA D'EL REY MARRIOTT GOLF & BEACH RESORT

Av. D.ª Inês de Castro, N.º 1 Vale de Janelas, 2510-451 Óbidos, Portugal

T. +351 262 905 100

[www.praia-del-rey.com](http://www.praia-del-rey.com)

 [facebook.com/MarriottPraiaDelRey](https://facebook.com/MarriottPraiaDelRey)

 [instagram.com/marriottpraiadelrey/](https://instagram.com/marriottpraiadelrey/)

### DIRECTIONS

From: Porto

To: Praia D'El Rey Marriott Golf & Beach Resort

- Enter the A1 towards Lisbon. (take toll ticket);
- Exit at Leiria (pay toll) and continue towards the A8, direction Caldas da Rainha / Lisbon;
- Enter the A8 (take toll ticket) and travel in the direction of Marinha Grande / Nazaré / Tornada (pay toll);
- Exit the A8 at exit 14, in the direction of IP6 Peniche;
- Continue until exit for Serra D'El Rei;
- At the roundabout, follow the signs towards Serra D'El Rei;
- Turn right after the traffic light;
- Turn right at the junction with the sign to Marriott Resort Praia D'El Rey;
- After entering the Resort, turn left at the sign for the Hotel;
- The hotel is located at the end of this street, on the right.

From: Lisbon

To: Praia D'El Rey Marriott Golf & Beach Resort

- Enter the A8, travelling in the direction of Loures / Leiria (take toll ticket);
- Follow the signs for Loures / Malveira / Torres Vedras (pay toll in Bombarral);
- Exit the A8 at exit 14, in the direction of IP6 Peniche;
- Continue until the exit for Serra D'El Rei;
- At the roundabout, follow the signs towards Serra D'El Rei;
- Turn right after the traffic light;
- Turn right at the junction with the sign to Marriott Resort Praia D'El Rey;
- After entering the Resort, turn left at the sign for the Hotel;
- The hotel is located at the end of this street, on the right.

### GPS COORDINATES

Latitude: 39° 23' 25.0974"

Longitude: 9° 17' 15.7056"

### DISTANCE FROM THE RESORT

25 min.	C. da Rainha Cultural and Congress Centre
15 min.	Medieval village of Óbidos
10 a 30 min.	Peniche, Baleal and Santa Cruz beaches
10 a 30 min.	Local vineyards for wine-tasting events
5 a 30 min.	3 golf courses (18 holes)
40 min.	Boat to the Berlengas Islands from Peniche
50 min.	Lisbon Airport

